



Epping

City Improvement District

FOR A SECURE, CLEAN WORKING ENVIRONMENT

ANNUAL REPORT

1 July 2016 - 30 June 2017

Board Members

Name	Current SRA Portfolio	Company
Atawullah Sondag-Chairman	Security, Cleaning & Financial	Growthpoint Properties
William Wakefield	Security, Cleaning, Marketing, Projects	William Wakefield Property Solutions
John Dammert	Financial & Marketing	Golden Arrow Bus Services
Heinrich Husselmann	Financial, Project & Marketing	Nikki Distributors
Keith Robson	None	Vega Properties

Auditors

RSM Betty & Dickson

INDEX

Summary	Pg 3
Camera Initiative Sponsors 2016-2017	Pg 3
ECID Members	Pg 3-4
Marketing & Communication with Members	Pg 4
Public Safety Report	Pg 4
• Security Stats for July 2015-June 2017	Pg 5-6
Essential Cleaning Report	Pg 7
• Cleaning Stats for July 2016-December 2016	Pg 7
Princeton Cleaning Report	Pg 8
• Cleaning Stats for January 2017-June 2017	Pg 8-9
Law Enforcement Report	Pg 9
• Law Enforcement Fine Values-March 2009-June 2017	Pg 10
• Law Enforcement Stats for October 2016-June 2017	Pg 10
Camera Report	Pg 11
• Annual Camera Report July 2016-June 2017	Pg 11
• Camera Locations	Pg 12
Light Locations	Pg 13
Social Responsibility	Pg 14-16
General	
• ECID 5 Year Renewal & WPP Extension	Pg 17
• Armco Barriers & Bollards	Pg 17
• Hard Standing Bofors	Pg 18
• Feeding the Homeless	Pg 18
• Greening Initiative Award Ceremony	Pg 19
• Siding Leases	Pg 19
• Christmas Food Hampers	Pg 20
• Courtney Peters	Pg 20
Projects Completed For 2016/2017	Pg 21-22
Projects Not Completed In 2016/2017	Pg 22
Possible Future Projects	Pg 22

SUMMARY

1. The ECID day to day administrations are carried out by the coordinator Tony Bartram, the manager Lizette Johnstone, the security & projects officer Ryan Ord and the admin assistant Anette Brand, who in turn report to the Board.
2. Anette Brand started working at the ECID in January 2017 and is already a valued member of our team.
3. We realize that safety is a core value that cannot be compromised, and with this in mind we are constantly evaluating the needs of Epping and continually striving to deliver an enhanced service.
4. The continued sponsorships towards the camera initiatives has been exceptional, with an amount of R 288 435 ex vat raised for the period 1 July 2016-30 June 2017.

CAMERA INITIATIVE SPONSORS 2016-2017

Aucor South	Autozone Holding (Pty) Ltd-Epping
Coca Cola Canners	Epping Industrial Suppliers
Growthpoint Properties Ltd	Indigo Brands (Pty) Ltd
Lawn Star	Lithotech Manufacturing Cape
Masterpak Cape	Melbro Wholesale
Metboard Properties Ltd	Micro Mouldings (Pty) Ltd
Switchboard Manufactures Cape	Unique Hydra (Pty) Ltd
Unitrans Passenger (Mega Coach)	

ECID MEMBERS

The ECID has a total of **261** members

The following members resigned:

Alamien Foods	Bohler Uddeholm Africa Pty Ltd-unit 10 (S/T)
Ojowi Pty Ltd	Riyaaz Gray t/a R & F Potatoe Wholesalers
Johnson Crane Hire	Animal Anti-Cruelty League
Brice Property Management	Bakker & Steyger Tri Angle x 2 Properties
The Pie 227 Trust-unit 9 (S/T)	RMB Properties x 2 Properties
Dairybelle Pty Ltd x 2 Properties	

The following members were approved

AKG Trust-unit 4 (S/T)	Animal Anti Cruelty League
Bondstick cc	Bridoon Trade & Invest Pty Ltd
Dealcom Trading (Pty) Ltd	G&A Family Trust-unit 9 (S/T)
Imabli Props 21 (Pty) Ltd	Investec Property (Pty) Ltd

Johnson Crane Hire	J W Mitchell Investments Pty Ltd
Neopak Corrugated	Palm Trust
Postal Presents (Pty) Ltd	Steinhoff Properties (Pty) Ltd x 2
Stellval Properties Pty Ltd	Soleprops 137 (Pty) Ltd
The Mast Trust	The Meyer Feldman Trust
The Pamazinda Trust	The Shirton Trust-unit 7 (S/T)
Deal Commerce Property Fund No 18 (Pty) Ltd	
Kovco Property Investment (Pty) Ltd	

MARKETING & COMMUNICATION WITH MEMBERS

Lizette Johnstone carried out 720 company visits, sent out 57 bulk emails to over 1000 people on the database, placed in excess of 55 articles on the website and attended 23 meetings with Council officials. Brochures and 2017 calendars have been compiled for distribution to companies.

Ryan Ord carried out 340 company visits and attended 33 Sector Police meetings, 22 SAPS/Vanguard smash & grab meetings and 60 railway infrastructure & security meetings.

Anette Brand carried out 167 company visits.



PUBLIC SAFETY REPORT

With the focus being to ensure the safety of all tenants and patrons entering the Epping Industrial environment; a 24 hr. hotline dedicated to the needs of owners & tenants will dispatch the necessary assistance immediately. The security compliment comprises of 1 supervisor; 6 security/public safety officers, 4 vehicles and 2 quads bikes over a 24 hr period. In addition, there are 2 security officers who are on duty Monday-Friday from 06h00-18h00, these officers also act as drivers for the Law Enforcement officers. The team is tasked with public safety related services & receives further back up from the various Law Enforcement Departments. A manned mobile caravan is stationed at predetermined sites Monday to Friday between 06h00-18h00.

The quad bikes continue to monitor the rail track area and respond to activities picked up by the cameras. The quad bikes are seen as an integral part of the ECID Security efforts.

A monthly security report highlighting all concerns attended to is sent to owners, tenants and other interested parties.

ANNUAL SECURITY STATS-JULY 2016-JUNE 2017

**THE TABLE GIVES A RUN-DOWN OF STATS FOR THE PAST 2 YEARS
AS PER REPORTS SUPPLIED TO THE ECID
BY EXECUTIVE RISK CONSULTANTS**

Incidents	Total 2015- 16	Total 2016- 17
Animal Assistance	3	8
Armed Robbery	15	24
Assault	10	6
Attempted Armed Robbery	3	1
Attempted Mugging	3	2
Attempted Murder	0	1
Attempted Shoplifting	0	1
Attempted Smash & Grab	0	1
Attempted Theft-In Building	4	13
Attempted Theft-Yard/Road	20	20
Body Dumped	0	3
Business / Public Assistance	264	221
Cart Horse Check / Complaint	3	1
Damage to Property	8	5
Damaged CID Property	4	3
Damaged Council Property	6	2
Drunk and Disorderly/Drinking in Public	15	5
Drunk Driving	3	0
Dumping	16	12
Vehicle Impoundments for Dumping of Wood at Illegal Squatters	0	2
Fallen Trailer / Trailer Unattended	1	1
Fires	31	29
Fraud/Counterfeit	0	3
Hit and Run	1	5
Insecure Premises	18	5
Motor Vehicle Accidents	107	116
Motor Vehicle Accidents Involving a Pedestrian	0	6
Mugging	19	7
Murder	1	0
Possession / Confiscation of Suspected Stolen Items	26	23
Possession / Confiscation of a Weapon	14	5
Possession / Use of Drugs	8	2
Public Disturbance	16	8
Public Indecency	8	4
Shoplifting/Internal Theft	9	7
Smash & Grab	8	5

Stolen goods recovered	1	4
Strike Action	2	1
Suspicious Persons-Searched	1034	1290
Suspicious Vehicles-Checked	619	655
Theft-In Building (Break ins)	20	25
Theft-Yard / Road	67	43
Trespassing / Vagrants / Vagrants	26	19
Trolley/Bin Searches / Confiscations	166	271
Vehicle-Hi Jacking	0	0
Warnings Issued	0	25
Workers in Area doing Repairs & Maintenance	62	44
Arrests / Apprehensions	81	55
Total	2722	2989

ERC Security



Public Safety Mobile Unit



The cleaning compliment comprises of 1 manager, 2 supervisors and 18 cleaning staff. The team is tasked with cleaning and cutting verges, trimming trees, street sweeping, cleaning of catch pits, drains, lamp posts and the removal of illegally dumped rubble and general cleaning. All cardboard, plastic, glass and paper are recycled. All garden refuse is used to make compost.

A monthly report highlighting all cleansing completed, is sent to all owners, tenants and other interested parties.

Cleaning teams are deployed on a daily basis at the informal market due to the continuing dumping of rotten fruit and 3 times a week to the areas outside the scrap metal dealers.

The ECID said goodbye to Essential Cleaning after 3 productive years and we wish them well in their future endeavors.

CLEANING STATS-JULY 2016-DECEMBER 2016 **AS SUPPLIED BY ESSENTIAL CLEANING**

ITEM	2015-2016	2016
Manholes & Catch pit Gulley's Cleaned Out	2418	543
Concrete Waste & Illegal Dumping Removed	2.5 tons	0
Truck loads-Garden Refuse	106.2 tons	24.8
Illegal Signs Removed	0	0
Amount of Times Grass Verges Were Cut	12	5
Trees Pruned	476	217
Bridge Sides Cut	8	3
Alley Ways Cleaned	36	17
Refuge Bags Removed		
Recyclable-Garden	14207	3050
Recyclable-General	10844	3718
Non-Recyclables	7971	2965
Total Bags Removed	33022	9733

Essential Cleaning



PRINCETON CLEANING REPORT

It was decided by the ECID to award the new cleansing contract to Princeton Gardening Services, we look forward to working with Princeton once again.

The area around the informal market, the scrap metal dealers and waste paper recyclers remain a major challenge, especially the informal market area. The traders leave rotten fruit in crates and on the sidewalk areas daily and as a result, a cleaning team is deployed there on a daily basis.

The area outside the scrap metal dealers are also a challenge with the clientele chopping up and stripping of items on the sidewalk.

Another area of concern is the papers blowing out of the yards of paper recyclers, creating a vast roving mess of paper.

The cleaning compliment comprises of 1 manager, and 26 cleaning staff. The team is tasked with cleaning and cutting verges, trimming trees, street sweeping, cleaning of catch pits, drains, lamp posts and the removal of illegally dumped rubble and general cleaning. All cardboard, plastic, glass and paper are recycled. All garden refuse is used to make compost.

A monthly report highlighting all cleansing completed, is sent to all owners, tenants and other interested parties.

CLEANING STATS-JANUARY 2017-JUNE 2017 **AS SUPPLIED BY PRINCETON CLEANING**

ITEM	2017
Manholes & Catch pit Gulley's Cleaned Out	73
Concrete Waste & Illegal Dumping Removed	3.5
Truck loads-Garden Refuse	2.5
Illegal Signs Removed	47
Trees Pruned	39
Amount of Times Grass Verges Were Cut	4
Bridge Sides Cut	3
Alley Ways Cleaned	24
Refuge Bags Removed	
Recyclable-Garden	6421
Recyclable-General	7141
Non-Recyclables	4101
Total Bags Removed	17663

Princeton Cleaning



LAW ENFORCEMENT REPORT

The Law Enforcement compliment consists of 2 officers, who are on duty Monday to Friday from 07h00-18h00. The officers are each assigned to a security vehicle with a security officer. Their duties include; enforcing nonmoving traffic violations, impoundments, arrests and general policing.

A monthly Law Enforcement report highlighting all concerns attended to is sent to owners, tenants and other interested parties.

Over a period of eight years, Law Enforcement has positively impacted on the Epping area and has attended to in excess of 19000 incidents. These incidents are indicated on the stats page, highlighting a wide range of incident types.

Due to contractual constraints, the Law Enforcement officers were deployed to the ECID from October 2016 to June 2017

LAW ENFORCEMENT FINE VALUES-MARCH 2009-JUNE 2017
AS SUPPLIED BY LAW ENFORCEMENT

	Fines Issued	Fines Value
March 2009-June 2009	658	
July 2009-June 2010	2759	R 1 289 850.00
July 2010-June 2011	2989	R 1 211 600.00
July 2011-June 2012	2414	R 1,179,010.00
July 2012-June 2013	2335	R 1,002,300.00
July 2013-June 2014	3080	R 1,380,750.00
July 2014-June 2015	2082	R 1 211 650.00
July 2015-June 2016	2597	R 661 900.00
July 2016-June 2017	184	R 103 800.00
TOTAL	19098	R 8 040 860.00

ANNUAL LAW ENFORCEMENT STATS-OCTOBER 2016-JUNE 2017
AS SUPPLIED BY LAW ENFORCEMENT

	Total
341 Notices-Vehicle Transgressors (Red lines etc-Fine only)	41
56 Notice-By Laws, Vehicle & Public Transgressors (Fine and summons issued)	2
Accident Assists	2
Burning Copper	7
By Law-Traffic	2
Complaints Received and Attended To	22
Defecate in Public	1
Drinking in Public	5
Failure to Comply	1
Failing to Stop	1
Hot Spots Patrolled	22
Informal Trading	1
Obstruction	25
Parking: Facing the Wrong Way	2
Parking: Red Line	84
Parking: Sidewalk	3
Parking: Yellow Line	1
Riotous: Behaviour	1
Stop & Search	18
Talking on Cell Phone While Driving	1
Taxi Conductor Not Wearing Reflector Vest	1
Trading Without a Permit	3
Traffic Congestion	1
Unlicensed Driver	9
Unlicensed Vehicle	40
Urinating in Public	13
Vagrants	8
Total Incidences	317



CAMERAS

The monitoring of public space includes 17 high zoom 360° PTZ ● cameras located in several parts of Epping, including the main rail track. The PTZ's are manned 24/7 at Myertal's offsite control room. The controllers are able to instantly dispatch the ground crew, either the vehicles or quad bikes depending on the landscape.

7 License Plate Recognition Cameras ▲ have been installed at the following entrances Gunners Circle/Jakes Gerwel Drive, Gunners Circle/Odin Way, Gunners Circle/Sipres Way, Bofors Circle/Carrier Way, Bofors Circle/Tripper Way, Bofors Circle/Showground Avenue and Bofors Circle/Jan Van Riebeeck Avenue, these cameras are also monitored by Myertal.

17 static cameras ★ have been installed at 16 rail siding gates with the 17th one situated on Bofors Circle, monitoring the Biodiversity area.

We also said goodbye to Myertal after 7 rewarding years and we wish Amir and Warren from Myertal well in their future ventures.

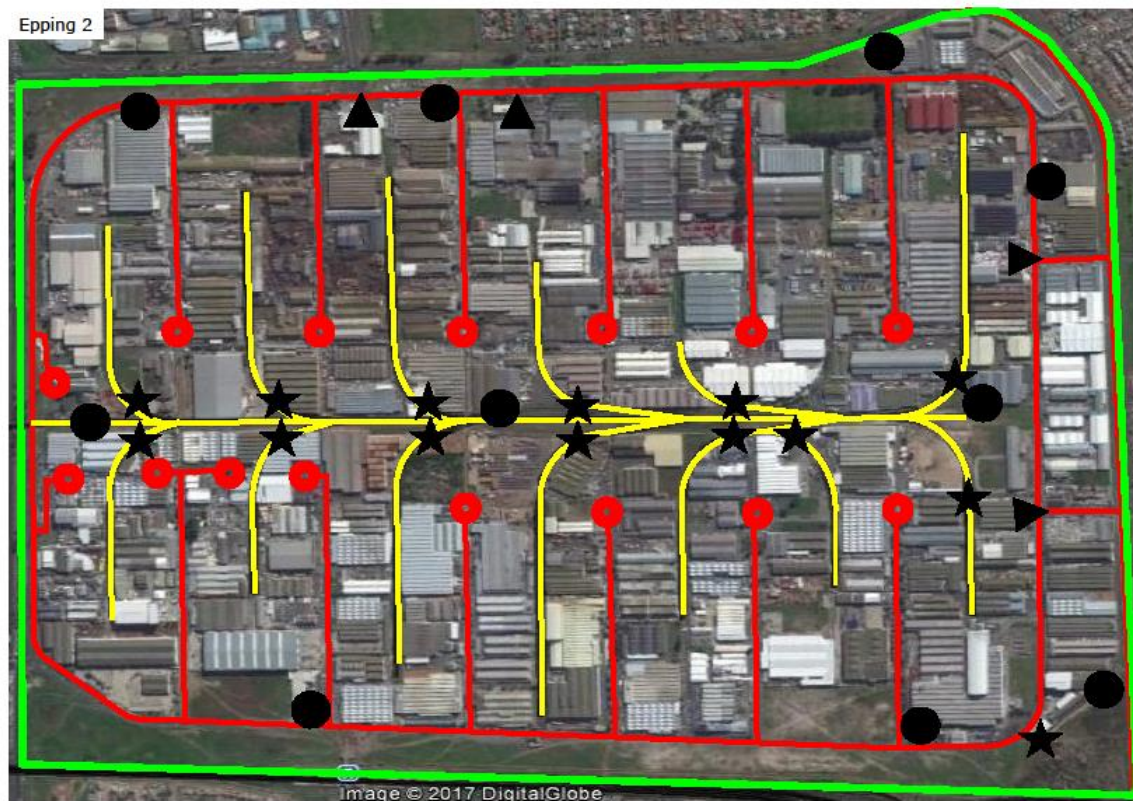
Stallion Security will be the new service providers for the monitoring of our camera network.

A monthly security report highlighting all concerns attended to is sent to owners, tenants and other interested parties.

ANNUAL REPORT JULY 2016-JUNE 2017 **AS SUPPLIED BY STALLION SECURITY**

	2015-2016	2016-2017
Minor Suspicious Activity Intercepted	2807	3243
Major Suspicious Activity Intercepted	40	47
Illegal Dumping Intercepted	25	18
Illegal Veld Fires Intercepted	0	3
Medical Response Dispatched	37	68
Warnings Issued	34	52
Vehicle Accidents Captured	22	65
Initiated Arrests-Stolen Property	16	17
Initiated Arrests-Break In & Enter Interception	1	4
Initiated Arrests-General	5	7
Total Interventions	2987	3524

CAMERA LOCATIONS



LIGHT LOCATIONS



SOCIAL RESPONSIBILITY

The Cart Horse Protection Association (CHPA) and Animal Anti Cruelty League (AACL) are both situated in Epping 2. The ECID assist both these organisations, CHPA by recognizing overloaded carts, ill-fitting or lack of shoes as well as incorrect harnessing.

Should any of these problems be noted, we inform their inspectors who in turn request we remove the harness and number plate, the horses are then either collected by an inspector or walked home minus the cart.

Stray and or injured animals are taken to the AACL where possible or alternately reported to their inspectors.

Lizette Johnstone collects scrap paper which is then sold and the monies donated to these 2 organisations.

Giant Hyper, Pioneer Foods and Capepots in conjunction with the ECID have continued with the monthly distribution of food packages to the Langa Baptist Church and the Church of the Nazarene in Bonteheuwel who have a soup kitchen and a food parcel allocation scheme.

The ECID thank Giant Hyper, Pioneer Foods and Capepots for their continued, overwhelming support of those less fortunate



LANGA BAPTIST CHURCH



**CHURCH OF THE NAZARENE
BONTEHEUWEL**

The following food items were distributed during the 2016/17 year;

Pioneer Foods	800kg Beans
Giant Hyper	24 x 750g Coffee
	14400 Tea Bags
	24 x 1kg Peanut Butter
	28 x 1kg Jam
	288 Cans of Baked Beans
	220kg Samp
	288 Cans of Pilchards
	180 x 500g Packets of Dry Soup Mix
	180 x 500g Packets of Lentils
Anonymous Donor	2 x 25kg Sugar
Capepots	3 Pockets of Sweet Potatoes
	22 Pockets Potatoes
	6 Boxes of Peppers
	12 Pockets of Onions
	8 Boxes of Tomatoes
	1 Pockets of Squash

Since its inception in July 2012 the following has been distributed;

PIONEER FOODS	TOTAL
Barley-50 kg	106
Beans-50 kg	37
Mealie Meal-kg	3520
Oats-Cases	340
Oats-Sacks	32
Smash-Boxes	5
GIANT HYPER	
Baked beans-cans	1394
Chips 50 g Packets	200
Coffee-750g	91
Cookies-Kg	4
Cooldrink-lt	3
Dry Soup mix-500g	535
Foamalite Cups	100
Jam-1 kg	126
Lentils-500 g	517
Mixed Veg-Cans	240
Peanut Butter-1kg	112
Peas-Cans	168
Pilchards-Cans	1392
Rice-5kg	333
Samp & Beans-500g	20
Samp-kg	630
Spaghetti-Cans	48
Sweetcorn-Cans	48
Tea-Bags	46500

CAPEPOTS	
Baby Potatoes-Pocket	15
Butternut-Pocket	49
Gourmet Potatoes-Box	23.5
Onions-Pocket	196
Peppers-Box	21
Potatoes-Pocket	199
Squash-Pocket	95
Sweet Potatoes-Pocket	28
Tomatoes-Boxes	75
ANONYMOUS	
Blue T shirts	4
Green Golf Shirts	4
Non- slip dash board mat	1
Shirts	304
Shorts	14
Sugar-Kg	50
Umbrellas	4
JUMBO CASH & CARRY	
Cans Food-Variou s	70
Gravy & Sauces-Packets	11
Mayonnaise-Bottle	1
Sishebo Mix-Packets	6
Soup-Packets	9
Southern Coating-Boxes	13
Soya Boxes	6
Stew Granules-Sachets	2
Stock Cubes	50
Tea Bags	1178
Tea-Grams	1925
Toothpaste	1
Various Spices-Sachets	154
BRAFICA	
Cooldrink-250ml	48
Glucose drink-sachets	192
HOT FAVOURITES	
Malva Pudding-2.5kg	9
Rolls	200
Tomatoe Sauce-Litres	3
Vienna's	200
MELBRO	
Toys-Large Cartons	3

GENERAL

ECID 5 YEAR RENEWAL & WPP EXTENSION

The ECID received approval to extend the term (1 July 2017 to 30 June 2022) and amend the Business Plan (Boundaries to include Western Province Park) for Epping City Improvement District on 29 March 2017

ARMCO BARRIERS & BOLLARDS

The ECID wish to extend our thanks to Conroy Cyster Senior Superintendent: Depot Manager TDA - Asset Management and Maintenance & Bongani Mjikelo Superintendent: CT - Asset Management and Maintenance for the speedy response and assistance to the problem of vehicles mounting the pavement on the corner of Evans Avenue, driving on the pavement past the SBH intersection before returning to the road. This was a huge danger to pedestrians and this also destroyed the grass that had managed to survive. Council installed 2 Armco barriers as well as 2 wooden bollards.



HARD STANDING ON BOFORS CIRCLE

We wish to thank Deon Botha, PPO Infrastructure Maintenance: District 3, TDA Cape Town for arranging to have milling core spread out on the Bofors Circle buffer opposite the Shell Truck Port up to Bertie Avenue, an area where interlinks park daily. This has helped in stopping the blockage of drains, making the area look cleaner as well as preventing the trucks from getting stuck which then results in backed up traffic for a considerable length of time.



FEEDING THE HOMELESS

On the 1st November 2016 the ECID in conjunction with Beauty Without Cruelty handed out hotdogs and fruit to those less fortunate and the homeless.



GREENING INITIATIVE AWARD CEREMONY

The Green Initiative was formed by SMMart and the Epping City Improvement District in association with Wasteplan.

The plan is to collect recyclable materials from companies in Epping which are managed by the CID.

At no cost to the companies, the materials are then transported to Wasteplan facilities which are also based in Epping.

Recyclables are collected on a weekly/monthly basis depending on the amount, collections are outsourced to smaller business, thereby generating job creation and giving back.

The ECID together with Illumina Lighting, Medi Post and Green Cross received our Green Certificate on 30 June 2017 which is recognised by Wasteplan and the City of Cape Town.



SIDING LEASES

Lizette Johnstone assisted the following property owners to submit siding lease applications; County Fair Foods Pty Ltd, Karez Trading (Pty) Ltd, Oasis Crescent Property Fund & Rencape (Pty) Ltd.

CHRISTMAS FOOD HAMPERS

The ECID would like to thank Mr Karriem from Giant Hyper for providing a food hamper for each security officer as well as the law enforcement officers.



RIP COURTNEY PETERS

The tragic incident involving the untimely and unfortunate death of Courtney Peters, led to the discovery of her body on the 15th May 2017. A positive identification of the suspect was obtained via the static cameras installed at the rail siding gates. Our thoughts are with her family.



PROJECTS COMPLETED FOR 2016/2017

1. Resizing of the Fisher Avenue Traffic Island, signed off by Council on 13 Jan 17.



2. 12 additional Flood Lights installed at the following sidings-1 each at; Hawkins/Grenville, Grenville/Fisher, Bertie/Christian, Elliot/Fitzmaurice, Goodenough/Bofors, Hewett/Kinghall, Kinghall/Losack, 2 at Benbow/Market and 3 at Dacres/Elliot.



3. The following cameras were installed; 16 Static Motion Detection Cameras on the rail siding and 1 static camera monitoring the biodiversity area on Bofors Circle behind Document Warehouse.



3.1. 1 x PTZ at Lithotech over looking over the public parking area in Admiral Crescent.



THE FOLLOWING PROJECTS WERE NOT COMPLETED IN 2016/2017 DUE TO CONSTRAINTS AND ARE NOW FINALISED & TO BE COMPLETED FOR 2017/2018

Excess funds to be utilised for these projects

- 1 x LPR to be installed at SAPS Logistics-R 60 000
- Network Consultants Fee-R 60 000
- Upgrading of Management Software for Cameras-R 845 925

POSSIBLE FUTURE PROJECTS-TO BE FINALISED

- Install New Gates / Fences as Required
- Install Lighting as Required
- Additional Foot Patrols at Hot Spots
- Upgrading the Camera System to run on Fibre Optics
- Moving the Camera Control Room from Woodstock to the ECID Office
- 40 Ton Interlink Parking Erf 112629
- LPR Camera-WPP
- Upgrade Mobile Security Office with a Camera System.